



# 2018 LTE基站天线

LTE Base station antenna Product Manual



# 关于我们

## About Us



广东盛路通信科技股份有限公司是国内领先的天线、射频产品的生产基地。成立于1998年，公司总部占地100000m<sup>2</sup>，厂房67000m<sup>2</sup>，拥有员工1500余人。

公司专业研发生产天线、射频产品等2000余个品种。被评定为广东省省级企业技术中心和国家级高新技术企业的盛路，拥有雄厚的研发生产能力和先进的仪器设备，包括SG128、SG64大型微波暗室，天线远场测试系统和环境实验室，现已通过了ISO9001:2000、ISO14001、OHSMS18001以及RoHS等国际认证。

盛路凭借其强大的自主创新力量，秉承“为客户创造价值”的经营理念，为世界通信行业的发展竭诚贡献。

Found in 1998, with nearly 2500 employees, with a factory area covering 100000m<sup>2</sup> and factory buildings covering 67000m<sup>2</sup>, Shenglu Telecommunication Tech.Co.,LTD., is a leading supplier for design and manufacture of antennas and RF components for a wide range of frequencies and wireless communication applications.

Shenglu's main product range includes: Antennas, RF Active components, and RF Passive Components.

While being awarded "Provincial Enterprise R&D Center" and "High-tech Private Enterprise" certificates, Shenglu maintains the strong assets of R&D and manufacturing know how in this field. Shenglu also possesses a complete series of advanced instruments and test equipments, including a large-scale RF anechoic chamber, antenna far field test system, as well as a complete line of environmental test equipments. Shenglu has also obtained the certificates for ISO9001:2000, ISO14001, OHSMS18001 and RoHS.

To provide high quality and fast services to our customers, Shenglu has established a nationwide sales network and oversea services agencies in USA, Asia Pacific, Europe and Africa. With superior management and the high-quality products, Shenglu has gained widespread acceptance in both domestic and foreign markets. In addition, Shenglu has maintained continuous increase in sales revenue as well as continuously updating the product line to keep us with the fast growing market.

With a good capability in independent innovation, Shenglu keeps the management concept for "create value for customers" and contributes our endless wisdom and efforts for the development in worldwide wireless communication industry.



# 目 录

## Contents

**01 基站天线** LTE Base Station Antenna

02 室分天线 IDS Antenna

03 终端天线 Automotive Antenna

04 汽车天线 Terminal Antenna

05 微波天线 Microwave Antenna





01

# 基站天线

Base Station Antenna

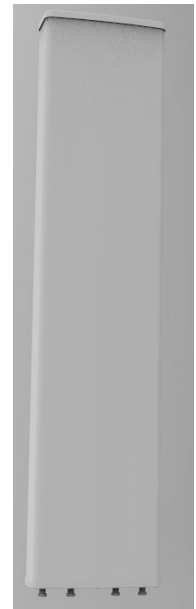




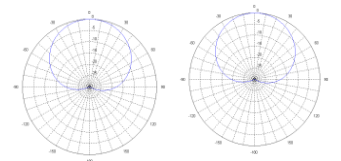
- 窄带物联网 基站天线
- NB 非电调天线 4端口 15dBi 65°

## • SL12536系列

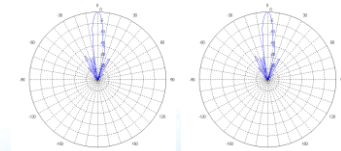
| Electrical Parameter |                               |                    |                 |
|----------------------|-------------------------------|--------------------|-----------------|
| 频率范围(MHz)            | Frequency (MHz)               | 885-960            | 885-960         |
| 增益(dBi)              | Gain (dBi)                    | 14.5               | 14.5            |
| 水平波瓣宽度(°)            | Horizontal Beam width(3dB)    | 65±6               | 65±6            |
| 垂直波瓣宽度(°)            | Vertical Beam Width(3dB)      | ≥12                | ≥12             |
| 电下倾角(°)              | Electrical Downtilt           | 0/3/6              | 0/3/6           |
| 电压驻波比                | VSWR                          | ≤1.5               | ≤1.5            |
| 隔离度(dB)              | Isolation                     | ≥25                | ≥25             |
| 端口隔离度(dB)            | Isolation Between Ports       | ≥25                | ≥25             |
| 交叉极化鉴别率(dB)          | Cross Polarization Ratio      | 0°≥15<br>±60°≥8    | 0°≥15<br>±60°≥8 |
| 上旁瓣抑制(dB)            | Upper Sidelobe Suppression    | ≤-15               | ≤-15            |
| 前后辐射比(dB)            | Front to Back Ratio           | ≥25                | ≥25             |
| 极化形式                 | Polarization                  | ±45°               | ±45°            |
| 功率容量(W)              | Input Maximum CW Power        | ≥80                | ≥80             |
| 三阶互调(dBm)            | PIMD 3th                      | ≤-107dBm(@2*43dBm) |                 |
| 二阶互调(dBm)            | PIMD 2th                      | ≤-107dBm(@2*43dBm) |                 |
| 端口阻抗(Ω)              | Impedance                     | 50                 |                 |
| 接口形式                 | Input Connector               | 4*7/16DIN female   |                 |
| Other Parameter      |                               |                    |                 |
| 天线尺寸(mm)             | Dimensions of Antenna         | 1286×416×164       |                 |
| 包装尺寸(mm)             | Dimensions of Package         | 1505×500×275       |                 |
| 天线重量(kg)             | Weight of Antenna             | 15                 |                 |
| 安装架重量(kg)            | Weight of Mounting Kits       | 4.7                |                 |
| 机械调整范围(°)            | Install Position Adjustment   | 0~14               |                 |
| 工作温度(°C)             | Temperature                   | -40~+70            |                 |
| 天线罩材料                | Radome Material               | UPVC/FRP           |                 |
| 抱杆直径(mm)             | Diameter of Installation pole | Φ50~ Φ110          |                 |



885-960/885-960MHz



水平面方向图  
Horizontal pattern



垂直面方向图  
Vertical pattern

# 基站天线 BST Antenna

- 窄带物联网 基站天线
  - NB 非电调天线 4端口 16.5dBi 65°
- ## SL12535系列

### Electrical Parameter

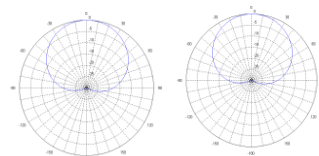
| 频率范围(MHz)   | Frequency (MHz)            | 885-960            | 885-960         |
|-------------|----------------------------|--------------------|-----------------|
| 增益(dBi)     | Gain (dBi)                 | 16.5               | 16.5            |
| 水平波瓣宽度(°)   | Horizontal Beam width(3dB) | 65±6               | 65±6            |
| 垂直波瓣宽度(°)   | Vertical Beam Width(3dB)   | ≥8                 | ≥8              |
| 电下倾角(°)     | Electrical Downtilt        | 0/3/6              | 0/3/6           |
| 电压驻波比       | VSWR                       | ≤1.5               | ≤1.5            |
| 隔离度(dB)     | Isolation                  | ≥25                | ≥25             |
| 端口隔离度(dB)   | Isolation Between Ports    | ≥25                | ≥25             |
| 交叉极化鉴别率(dB) | Cross Polarization Ratio   | 0°≥15<br>±60°≥8    | 0°≥15<br>±60°≥8 |
| 上旁瓣抑制(dB)   | Upper Sidelobe Suppression | ≤-15               | ≤-15            |
| 前后辐射比(dB)   | Front to Back Ratio        | ≥25                | ≥25             |
| 极化形式        | Polarization               | ±45°               | ±45°            |
| 平均功率容量(W)   | Input Maximum CW Power     | ≥80                | ≥80             |
| 三阶互调(dBm)   | PIMD 3th                   | ≤-107dBm(@2*43dBm) |                 |
| 二阶互调(dBm)   | PIMD 2th                   | ≤-107dBm(@2*43dBm) |                 |
| 端口阻抗(Ω)     | Impedance                  | 50                 |                 |
| 接口形式        | Input Connector            | 4*7/16DIN female   |                 |

### Other Parameter

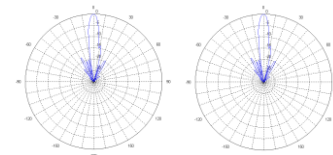
|           |                               |              |
|-----------|-------------------------------|--------------|
| 天线尺寸(mm)  | Dimensions of Antenna         | 1904×416×164 |
| 包装尺寸(mm)  | Dimensions of Package         | 2155×500×275 |
| 天线重量(kg)  | Weight of Antenna             | 23           |
| 安装架重量(kg) | Weight of Mounting Kits       | 4.7          |
| 机械调整范围(°) | Install Position Adjustment   | 0~12         |
| 工作温度(°C)  | Temperature                   | -40~+70      |
| 天线罩材料     | Radome Material               | UPVC/FRP     |
| 抱杆直径(mm)  | Diameter of Installation pole | Φ50~ Φ110    |



885-960/885-960MHz



水平面方向图  
Horizontal pattern

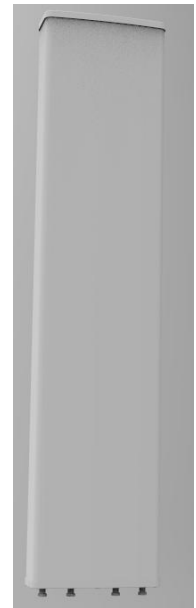


垂直面方向图  
Vertical pattern

- 窄带物联网 基站天线
- NB 非电调天线 4端口 17.5dBi 65°

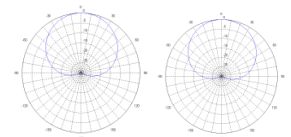
## • SL12765B

| Electrical Parameter |                            |                    |                 |
|----------------------|----------------------------|--------------------|-----------------|
| 频率范围(MHz)            | Frequency (MHz)            | 1710-1830          | 1710-1830       |
| 增益(dBi)              | Gain (dBi)                 | 17.5               | 17.5            |
| 水平波瓣宽度(°)            | Horizontal Beam width(3dB) | 65±6               | 65±6            |
| 垂直波瓣宽度(°)            | Vertical Beam Width(3dB)   | ≥7                 | ≥7              |
| 电下倾角(°)              | Electrical Downtilt        | 0/3/6              | 0/3/6           |
| 电压驻波比                | VSWR                       | ≤1.5               | ≤1.5            |
| 隔离度(dB)              | Isolation                  | ≥25                | ≥25             |
| 端口隔离度(dB)            | Isolation Between Ports    | ≥25                | ≥25             |
| 交叉极化鉴别率(dB)          | Cross Polarization Ratio   | 0°≥15<br>±60°≥8    | 0°≥15<br>±60°≥8 |
| 上旁瓣抑制(dB)            | Upper Sidelobe Suppression | ≤-16               | ≤-16            |
| 前后辐射比(dB)            | Front to Back Ratio        | ≥25                | ≥25             |
| 极化形式                 | Polarization               | ±45°               | ±45°            |
| 平均功率容量(W)            | Input Maximum CW Power     | ≥80                | ≥80             |
| 三阶互调(dBm)            | PIMD 3th                   | ≤-107dBm(@2*43dBm) |                 |
| 二阶互调(dBm)            | PIMD 2th                   | /                  |                 |
| 端口阻抗(Ω)              | Impedance                  | 50                 |                 |
| 接口形式                 | Input Connector            | 4*7/16DIN female   |                 |

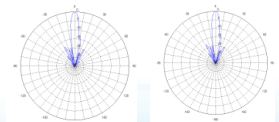


1710-1830/1710-1830MHz

| Other Parameter |                               |              |
|-----------------|-------------------------------|--------------|
| 天线尺寸(mm)        | Dimensions of Antenna         | 1333×310×109 |
| 包装尺寸(mm)        | Dimensions of Package         | 1600×400×190 |
| 天线重量(kg)        | Weight of Antenna             | 13.5         |
| 安装架重量(kg)       | Weight of Mounting Kits       | 4.7          |
| 机械调整范围(°)       | Install Position Adjustment   | 0~14         |
| 工作温度(°C)        | Temperature                   | -40~+70      |
| 天线罩材料           | Radome Material               | UPVC         |
| 抱杆直径(mm)        | Diameter of Installation pole | Φ50~ Φ80     |



水平面方向图  
Horizontal pattern



垂直面方向图  
Vertical pattern

# 基站天线 BST Antenna

- 窄带物联网 基站天线
- NB 电调天线 4端口 15dBi 65°

## • SL17344B

### Electrical Parameter

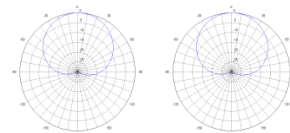
| 频率范围(MHz)   | Frequency (MHz)            | 885-960            | 885-960         |
|-------------|----------------------------|--------------------|-----------------|
| 增益(dBi)     | Gain (dBi)                 | 14.5               | 14.5            |
| 水平波瓣宽度(°)   | Horizontal Beam width(3dB) | 65±6               | 65±6            |
| 垂直波瓣宽度(°)   | Vertical Beam Width(3dB)   | ≥12                | ≥12             |
| 电下倾角(°)     | Electrical Downtilt        | 0-14               | 0-14            |
| 电压驻波比       | VSWR                       | ≤1.5               | ≤1.5            |
| 隔离度(dB)     | Isolation                  | ≥25                | ≥25             |
| 端口隔离度(dB)   | Isolation Between Ports    | ≥25                | ≥25             |
| 交叉极化鉴别率(dB) | Cross Polarization Ratio   | 0°≥15<br>±60°≥8    | 0°≥15<br>±60°≥8 |
| 上旁瓣抑制(dB)   | Upper Sidelobe Suppression | ≤-15               | ≤-15            |
| 前后辐射比(dB)   | Front to Back Ratio        | ≥25                | ≥25             |
| 极化形式        | Polarization               | ±45°               | ±45°            |
| 平均功率容量(W)   | Input Maximum CW Power     | ≥80                | ≥80             |
| 三阶互调(dBm)   | PIMD 3th                   | ≤-107dBm(@2*43dBm) |                 |
| 二阶互调(dBm)   | PIMD 2th                   | ≤-107dBm(@2*43dBm) |                 |
| 端口阻抗(Ω)     | Impedance                  | 50                 |                 |
| 接口形式        | Input Connector            | 4*7/16DIN female   |                 |

### Other Parameter

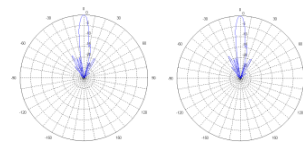
|           |                               |              |
|-----------|-------------------------------|--------------|
| 天线尺寸(mm)  | Dimensions of Antenna         | 1495×416×164 |
| 包装尺寸(mm)  | Dimensions of Package         | 1750×500×275 |
| 天线重量(kg)  | Weight of Antenna             | 19           |
| 安装架重量(kg) | Weight of Mounting Kits       | 4.7          |
| 机械调整范围(°) | Install Position Adjustment   | 0~14         |
| 工作温度(°C)  | Temperature                   | -40~+70      |
| 天线罩材料     | Radome Material               | 玻璃钢FRP       |
| 抱杆直径(mm)  | Diameter of Installation pole | Φ50~ Φ110    |



885-960/885-960MHz



水平面方向图  
Horizontal pattern



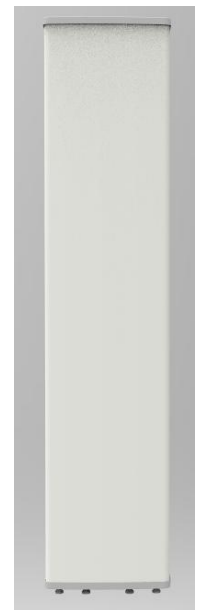
垂直面方向图  
Vertical pattern



- 窄带物联网 基站天线
- NB 电调天线 4端口 16.5dBi 65°

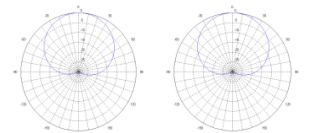
- **SL17344A**

| Electrical Parameter |                            |                    |                 |
|----------------------|----------------------------|--------------------|-----------------|
| 频率范围(MHz)            | Frequency (MHz)            | 885-960            | 885-960         |
| 增益(dBi)              | Gain (dBi)                 | 16.5               | 16.5            |
| 水平波瓣宽度(°)            | Horizontal Beam width(3dB) | 65±6               | 65±6            |
| 垂直波瓣宽度(°)            | Vertical Beam Width(3dB)   | ≥8                 | ≥8              |
| 电下倾角(°)              | Electrical Downtilt        | 2-12               | 2-12            |
| 电压驻波比                | VSWR                       | ≤1.5               | ≤1.5            |
| 隔离度(dB)              | Isolation                  | ≥25                | ≥25             |
| 端口隔离度(dB)            | Isolation Between Ports    | ≥25                | ≥25             |
| 交叉极化鉴别率(dB)          | Cross Polarization Ratio   | 0°≥15<br>±60°≥8    | 0°≥15<br>±60°≥8 |
| 上旁瓣抑制(dB)            | Upper Sidelobe Suppression | ≤-15               | ≤-15            |
| 前后辐射比(dB)            | Front to Back Ratio        | ≥25                | ≥25             |
| 极化形式                 | Polarization               | ±45°               | ±45°            |
| 平均功率容量(W)            | Input Maximum CW Power     | ≥80                | ≥80             |
| 三阶互调(dBm)            | PIMD 3th                   | ≤-107dBm(@2*43dBm) |                 |
| 二阶互调(dBm)            | PIMD 2th                   | ≤-107dBm(@2*43dBm) |                 |
| 端口阻抗(Ω)              | Impedance                  | 50                 |                 |
| 接口形式                 | Input Connector            | 4*7/16DIN female   |                 |

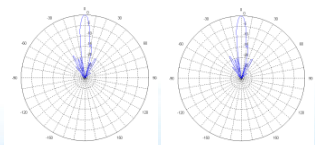


885-960/885-960MHz

| Other Parameter |                               |              |
|-----------------|-------------------------------|--------------|
| 天线尺寸(mm)        | Dimensions of Antenna         | 1907×416×164 |
| 包装尺寸(mm)        | Dimensions of Package         | 2155×500×275 |
| 天线重量(kg)        | Weight of Antenna             | 25.5         |
| 安装架重量(kg)       | Weight of Mounting Kits       | 4.7          |
| 机械调整范围(°)       | Install Position Adjustment   | 0~12         |
| 工作温度(°C)        | Temperature                   | -40~+70      |
| 天线罩材料           | Radome Material               | 玻璃钢FRP       |
| 抱杆直径(mm)        | Diameter of Installation pole | Φ50~ Φ110    |



水平面方向图  
Horizontal pattern



垂直面方向图  
Vertical pattern

# 基站天线 BST Antenna

- 窄带物联网 基站天线
- NB 电调天线 内置RCU

## RCU

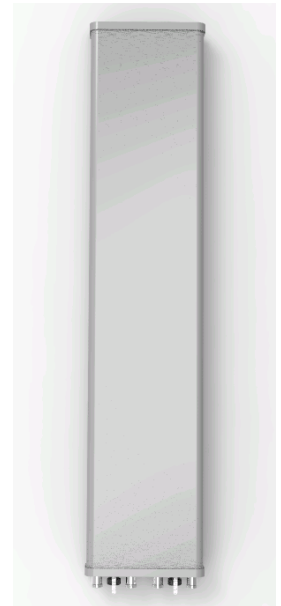
### 内置RCU

|         |                      |  |     |          |     |         |    |           |     |
|---------|----------------------|--|-----|----------|-----|---------|----|-----------|-----|
| RET形式   | RET Form             | 内置一体式  |     |          |     |         |    |           |     |
| RET 协议  | RET Protocol         | AISG2.0/3GPP   |     |          |     |         |    |           |     |
| 输入电压(V) | Input Power(V)       | 10-30 DC   |     |          |     |         |    |           |     |
| 功耗(W)   | Power Dissipation    | <5w (工作)<br><1w (待机)                                     |     |          |     |         |    |           |     |
| 校准时间(s) | Calibration Time     | <40 (典型值:2电机)  |     |          |     |         |    |           |     |
| RET 接口  | Connector            | 2 x 8 pin 接头(符合IEC 60130-9)<br>输入:阳头(Male)/输出:阴头(Female) |     |          |     |         |    |           |     |
| AISG连接口 | AISG Connector       | 1  | 2   | 3        | 4   | 5       | 6  | 7         | 8   |
|         |                      | DC   | n/c | RS-485 B | n/c | RS-485A | DC | DC return | n/c |
| 雷电保护    | Lightning Protection | 3(10/350 $\mu$ s)<br>10(8/20 $\mu$ s)                    |     |          |     |         |    |           |     |

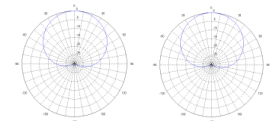
- 窄带物联网 基站天线
- NB 电调天线 4端口 17.5dBi 65°

- **SL17116A**

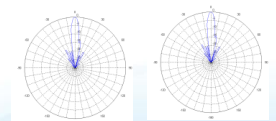
| Electrical Parameter |                               |                    |                 |
|----------------------|-------------------------------|--------------------|-----------------|
| 频率范围(MHz)            | Frequency (MHz)               | 1710-1830          | 1710-1830       |
| 增益(dBi)              | Gain (dBi)                    | 17.5               | 17.5            |
| 水平波瓣宽度(°)            | Horizontal Beam width(3dB)    | 65±6               | 65±6            |
| 垂直波瓣宽度(°)            | Vertical Beam Width(3dB)      | ≥7                 | ≥7              |
| 电下倾角(°)              | Electrical Downtilt           | 2-12               | 2-12            |
| 电压驻波比                | VSWR                          | ≤1.5               | ≤1.5            |
| 隔离度(dB)              | Isolation                     | ≥25                | ≥25             |
| 端口隔离度(dB)            | Isolation Between Ports       | ≥25                | ≥25             |
| 交叉极化鉴别率(dB)          | Cross Polarization Ratio      | 0°≥15<br>±60°≥8    | 0°≥15<br>±60°≥8 |
| 上旁瓣抑制(dB)            | Upper Sidelobe Suppression    | ≤-15               | ≤-15            |
| 前后辐射比(dB)            | Front to Back Ratio           | ≥25                | ≥25             |
| 极化形式                 | Polarization                  | ±45°               | ±45°            |
| 平均功率容量(W)            | Input Maximum CW Power        | ≥80                | ≥80             |
| 三阶互调(dBm)            | PIMD 3th                      | ≤-107dBm(@2*43dBm) |                 |
| 二阶互调(dBm)            | PIMD 2th                      | ≤-107dBm(@2*43dBm) |                 |
| 端口阻抗(Ω)              | Impedance                     | 50                 |                 |
| 接口形式                 | Input Connector               | 4*7/16DIN female   |                 |
| Other Parameter      |                               |                    |                 |
| 天线尺寸(mm)             | Dimensions of Antenna         | 1333×310×109       |                 |
| 包装尺寸(mm)             | Dimensions of Package         | 1600×400×190       |                 |
| 天线重量(kg)             | Weight of Antenna             | 15                 |                 |
| 安装架重量(kg)            | Weight of Mounting Kits       | 4.7                |                 |
| 机械调整范围(°)            | Install Position Adjustment   | 0~14               |                 |
| 工作温度(°C)             | Temperature                   | -40~+70            |                 |
| 天线罩材料                | Radome Material               | UPVC/FRP           |                 |
| 抱杆直径(mm)             | Diameter of Installation pole | Φ50~ Φ110          |                 |



1710-1830/1710-1830MHz



水平面方向图  
Horizontal pattern



垂直面方向图  
Vertical pattern

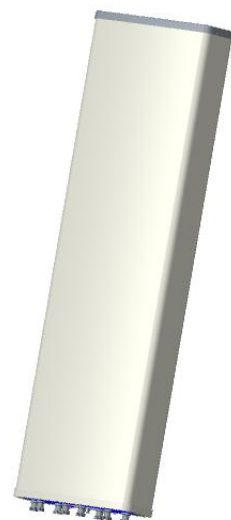
# 基站天线 BST Antenna

- 窄带物联网 基站天线
- NB 电调天线 8端口 15/17.5dBi 65°

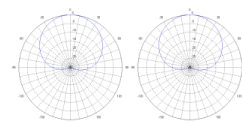
## • SL17345B

| Electrical Parameter |                            |                    |                 |
|----------------------|----------------------------|--------------------|-----------------|
| 频率范围(MHz)            | Frequency (MHz)            | 2*(885-960)        | 2*(1710-1830)   |
| 增益(dBi)              | Gain (dBi)                 | 14.5               | 17.5            |
| 水平波瓣宽度(°)            | Horizontal Beam width(3dB) | 65±6               | 65±6            |
| 垂直波瓣宽度(°)            | Vertical Beam Width(3dB)   | ≥12                | ≥7              |
| 电下倾角(°)              | Electrical Downtilt        | 0-14               | 2-12            |
| 电压驻波比                | VSWR                       | ≤1.5               | ≤1.5            |
| 隔离度(dB)              | Isolation                  | ≥25                | ≥25             |
| 端口隔离度(dB)            | Isolation Between Ports    | ≥25                | ≥25             |
| 交叉极化鉴别率(dB)          | Cross Polarization Ratio   | 0°≥15<br>±60°≥8    | 0°≥15<br>±60°≥8 |
| 上旁瓣抑制(dB)            | Upper Sidelobe Suppression | ≤-15               | ≤-15            |
| 前后辐射比(dB)            | Front to Back Ratio        | ≥25                | ≥25             |
| 极化形式                 | Polarization               | ±45°               | ±45°            |
| 平均功率容量(W)            | Input Maximum CW Power     | ≥80                | ≥80             |
| 三阶互调(dBm)            | PIMD 3th                   | ≤-107dBm(@2*43dBm) |                 |
| 二阶互调(dBm)            | PIMD 2th                   | ≤-107dBm(@2*43dBm) |                 |
| 端口阻抗(Ω)              | Impedance                  | 50                 |                 |
| 接口形式                 | Input Connector            | 8*7/16DIN female   |                 |

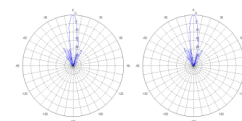
| Other Parameter |                               |              |
|-----------------|-------------------------------|--------------|
| 天线尺寸(mm)        | Dimensions of Antenna         | 1495×416×164 |
| 包装尺寸(mm)        | Dimensions of Package         | 1750×520×286 |
| 天线重量(kg)        | Weight of Antenna             | 32.4         |
| 安装架重量(kg)       | Weight of Mounting Kits       | 5.6          |
| 机械调整范围(°)       | Install Position Adjustment   | 0~14         |
| 工作温度(°C)        | Temperature                   | -40~+60      |
| 天线罩材料           | Radome Material               | 玻璃钢(FRP)     |
| 抱杆直径(mm)        | Diameter of Installation pole | Φ50~ 80      |



885-960/1710-1830MHz



水平面方向图  
Horizontal pattern



垂直面方向图  
Vertical pattern

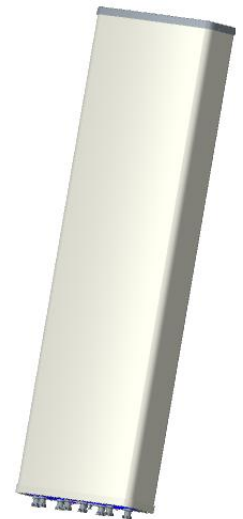


- 窄带物联网 基站天线
- NB 电调天线 8端口 16.5/17.5dBi 65°

## • SL17345A

### Electrical Parameter

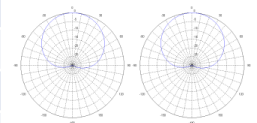
| 频率范围(MHz)   | Frequency (MHz)            | 2*(885-960)      | 2*(1710-1830)   |
|-------------|----------------------------|------------------|-----------------|
| 增益(dBi)     | Gain (dBi)                 | 16.5             | 17.5            |
| 水平波瓣宽度(°)   | Horizontal Beam width(3dB) | 65±6             | 65±6            |
| 垂直波瓣宽度(°)   | Vertical Beam Width(3dB)   | ≥8               | ≥7              |
| 电下倾角(°)     | Electrical Downtilt        | 2-12             | 2-12            |
| 电压驻波比       | VSWR                       | ≤1.5             | ≤1.5            |
| 隔离度(dB)     | Isolation                  | ≥25              | ≥25             |
| 端口隔离度(dB)   | Isolation Between Ports    | ≥25              | ≥25             |
| 交叉极化鉴别率(dB) | Cross Polarization Ratio   | 0°≥15<br>±60°≥8  | 0°≥15<br>±60°≥8 |
| 上旁瓣抑制(dB)   | Upper Sidelobe Suppression | ≤-15             | ≤-15            |
| 前后辐射比(dB)   | Front to Back Ratio        | ≥25              | ≥25             |
| 极化形式        | Polarization               | ±45°             | ±45°            |
| 平均功率容量(W)   | Input Maximum CW Power     | ≥80              | ≥80             |
| 三阶互调(dBm)   | PIMD 3th                   | ≤-107 (@2*43dBm) |                 |
| 二阶互调(dBm)   | PIMD 2th                   | ≤-107 (@2*43dBm) |                 |
| 端口阻抗(Ω)     | Impedance                  | 50               |                 |
| 接口形式        | Input Connector            | 8*7/16DIN female |                 |



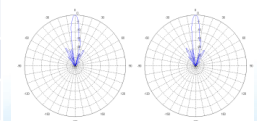
885-960/1710-1830MHz

### Other Parameter

|           |                               |              |
|-----------|-------------------------------|--------------|
| 天线尺寸(mm)  | Dimensions of Antenna         | 1910×416×164 |
| 包装尺寸(mm)  | Dimensions of Package         | 2160×520×286 |
| 天线重量(kg)  | Weight of Antenna             | 38.8         |
| 安装架重量(kg) | Weight of Mounting Kits       | 5.4          |
| 机械调整范围(°) | Install Position Adjustment   | 0~18         |
| 工作温度(°C)  | Temperature                   | -40~+60      |
| 天线罩材料     | Radome Material               | 玻璃钢(FRP)     |
| 抱杆直径(mm)  | Diameter of Installation pole | Φ50~ 80      |



水平面方向图  
Horizontal pattern



垂直面方向图  
Vertical pattern

# 基站天线 BST Antenna



- 窄带物联网 基站天线
- 多频多模 900/1800/FA/D 4+4+8+8 独立电调天线

## SL17366A

FA&D电性能参数

| 频率范围(MHz)             | F(1885~1920MHZ)    | A(2010~2025MHZ) | D(2575~2635MHZ) |       |
|-----------------------|--------------------|-----------------|-----------------|-------|
| 垂直面电调角范围(°)           | 2-12               | 2-12            | 2-12            |       |
| 电下倾角精度(°)             | ±1                 | ±1              | ±1              |       |
| 校准端口至各辐射端口的耦合度(dB)    | -26±2              | -26±2           | -26±2           |       |
| 校准端口至各辐射端口的幅度最大偏差(dB) | ≤0.7               | ≤0.7            | ≤0.7            |       |
| 校准端口至各辐射端口的相位最大偏差(°)  | ≤5                 | ≤5              | ≤5              |       |
| 校准端口及辐射端口电压驻波比        | ≤1.5               | ≤1.5            | ≤1.5            |       |
| 单元波束                  | 水平面半功率波束宽度(°)      | 100±15          | 90±15           | 65±15 |
|                       | 单元波束增益(dBi)        | ≥13.5           | ≥14.5           | ≥15.5 |
|                       | 交叉极化比(dB, 轴向)      | ≥15             | ≥15             | ≥15   |
|                       | 交叉极化比(dB, ±60°)    | ≥8              | ≥8              | ≥8    |
|                       | 前后比(dB)            | ≥23             | ≥23             | ≥25   |
| 广播波束                  | 水平面半功率波束宽度(°)      | /               | 65±5            | /     |
|                       | 广播波束增益(dBi)        | ≥15             | ≥14.5           | ≥15   |
|                       | ±32.5°扇区功率占比(%)    | 72±7            | /               | 72±7  |
|                       | ±60°扇区功率占比(%)      | ≥95             | /               | ≥90   |
|                       | 波束±60°边缘功率下降(dB)   | 12±3            | 12±3            | 12±3  |
|                       | 垂直面半功率波束宽度(°)      | ≥7              | ≥6.5            | ≥5    |
|                       | 交叉极化比(轴向)(dB)      | ≥18             | ≥18             | /     |
|                       | 交叉极化比(dB, ±20°)    | ≥20             | /               | /     |
|                       | 交叉极化比(dB, ±60°范围内) | ≥8              | ≥8              | ≥8    |
|                       | 前后比(dB)            | ≥25             | ≥25             | ≥25   |
| 上旁瓣抑制(dB)             | ≤-14               | ≤-14            | ≤-14            |       |
| 下部第一零点填充(dB)          | ≥-18               | ≥-18            | ≥-18            |       |

### FA&D电性能参数

| 频率范围(MHz) |                          | F(1885~1920MHz) | A(2010~2025MHz) | D(2575~2635MHz) |
|-----------|--------------------------|-----------------|-----------------|-----------------|
| 业务波束      | 0°指向波束增益 ( dBi )         | ≥19.5           | ≥20.5           | ≥21             |
|           | 0°指向波束水平面半功率波束宽度 ( ° )   | ≤29             | ≤26             | ≤25             |
|           | 0°指向波束水平面副瓣电平 ( dB )     | ≤-12            | ≤-12            | ≤-12            |
|           | ±60°指向波束增益 ( dBi )       | ≥17             | ≥17             | ≥17             |
|           | ±60°指向波束水平面半功率波束宽度 ( ° ) | ≤32             | ≤32             | ≤23             |
|           | ±60°指向波束水平面副瓣电平 ( dB )   | ≤-5             | ≤-5             | ≤0              |
|           | 0°交叉极化比 ( dB, 轴向 )       | ≥18             | ≥18             | ≥18             |
|           | 0°前后比 ( dB )             | ≥28             | ≥28             | ≥28             |

### 900&1800MHz电性能参数

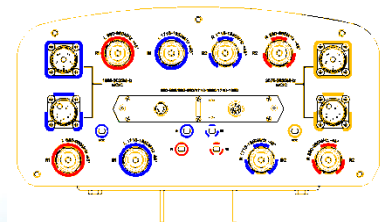
| 频率范围(MHz)      | 2*( 880-960 )       | 2*(1710-1850)   |
|----------------|---------------------|-----------------|
| 增益(dBi)        | ≥14                 | ≥16.5           |
| 水平波瓣宽度(°)      | 65±6                | 65 + 6 , 65-9   |
| 垂直波瓣宽度(°)      | ≥12                 | ≥6.5            |
| 电下倾角(°)        | 0-14                | 2-12            |
| 电压驻波比          | ≤1.5                | ≤1.5            |
| 隔离度 ( dB )     | ≥25                 | ≥25             |
| 端口隔离度 ( dB )   | ≥25                 | ≥25             |
| 交叉极化鉴别率 ( dB ) | 0°≥15<br>±60°≥8     | 0°≥15<br>±60°≥8 |
| 上旁瓣抑制 ( dB )   | ≤-15                | ≤-15            |
| 第一零点填充 ( dB )  | ≥-22                | ≥-22            |
| 前后辐射比 ( dB )   | ≥25                 | ≥25             |
| 极化             | ±45°                | ±45°            |
| 平均功率容量 ( W )   | ≥120                | ≥120            |
| 三阶互调 ( dBm )   | ≤-107dBm (@2*43dBm) |                 |
| 二阶反射互调 ( dBm ) | ≤-107dBm (@2*43dBm) |                 |

### 其它参数

|              |                         |
|--------------|-------------------------|
| 接口形式         | 8*7/16DIN female+4*集束接头 |
| 天线尺寸 ( mm )  | 1995*400*200mm          |
| 天线重量 ( kg )  | ≤42                     |
| 安装架重量 ( kg ) | 7                       |
| 机械调整范围(°)    | 0 ~ 12                  |



880-960/1710-1850MHz



# 基站天线 BST Antenna

- 超宽频 基站天线
- FDD/TDD 非电调 2端口 12dBi 65°

## • SL12768B

| Electrical Parameter |                               |                  |
|----------------------|-------------------------------|------------------|
| 频率范围(MHz)            | Frequency (MHz)               | 1710-2700        |
| 增益(dBi)              | Gain (dBi)                    | 12               |
| 水平波瓣宽度(°)            | Horizontal Beam width(3dB)    | 65±6             |
| 垂直波瓣宽度(°)            | Vertical Beam Width(3dB)      | 30±4             |
| 电下倾角(°)              | Electrical Downtilt           | 0/3/6            |
| 电压驻波比                | VSWR                          | ≤1.5             |
| 端口隔离度(dB)            | Isolation Between Ports       | ≥30              |
| 交叉极化鉴别率(dB)          | Cross Polarization Ratio      | 0°≥15<br>±60°≥10 |
| 上旁瓣抑制(dB)            | Upper Sidelobe Suppression    | N/A              |
| 前后辐射比(dB)            | Front to Back Ratio           | ≥25              |
| 极化形式                 | Polarization                  | ±45°             |
| 平均功率容量(W)            | Input Maximum CW Power        | ≥50              |
| 三阶互调(dBm)            | PIMD 3th                      | ≤-107 (@20W)     |
| 端口阻抗(Ω)              | Impedance                     | 50               |
| 接口形式                 | Input Connector               | 2*7/16DIN female |
| Other Parameter      |                               |                  |
| 天线尺寸(mm)             | Dimensions of Antenna         | 250×175×86       |
| 包装尺寸(mm)             | Dimensions of Package         | 450×250×200      |
| 天线重量(kg)             | Weight of Antenna             | 3                |
| 安装架重量(kg)            | Weight of Mounting Kits       | 2.1              |
| 机械调整范围(°)            | Install Position Adjustment   | 0~14             |
| 工作温度(°C)             | Temperature                   | -40~+60          |
| 天线罩材料                | Radome Material               | 玻璃钢(FRP)         |
| 抱杆直径(mm)             | Diameter of Installation pole | Φ50~ 80          |





- 超宽频 基站天线
- FDD/TDD 非电调 2端口 15dBi 65°

## • SL12765系列

| Electrical Parameter |                               |                  |
|----------------------|-------------------------------|------------------|
| 频率范围(MHz)            | Frequency (MHz)               | 1710-2700        |
| 增益(dBi)              | Gain (dBi)                    | 15               |
| 水平波瓣宽度(°)            | Horizontal Beam width(3dB)    | 65±6             |
| 垂直波瓣宽度(°)            | Vertical Beam Width(3dB)      | 14±2             |
| 电下倾角(°)              | Electrical Downtilt           | 0/3/6            |
| 电压驻波比                | VSWR                          | ≤1.5             |
| 端口隔离度(dB)            | Isolation Between Ports       | ≥30              |
| 交叉极化鉴别率(dB)          | Cross Polarization Ratio      | 0°≥15<br>±60°≥10 |
| 上旁瓣抑制(dB)            | Upper Sidelobe Suppression    | 16               |
| 前后辐射比(dB)            | Front to Back Ratio           | ≥25              |
| 极化形式                 | Polarization                  | ±45°             |
| 平均功率容量(W)            | Input Maximum CW Power        | ≥50              |
| 三阶互调(dBm)            | PIMD 3th                      | ≤-107 (@20W)     |
| 端口阻抗(Ω)              | Impedance                     | 50               |
| 接口形式                 | Input Connector               | 2*7/16DIN female |
| Other Parameter      |                               |                  |
| 天线尺寸(mm)             | Dimensions of Antenna         | 600×175×86       |
| 包装尺寸(mm)             | Dimensions of Package         | 800×250×200      |
| 天线重量(kg)             | Weight of Antenna             | 5                |
| 安装架重量(kg)            | Weight of Mounting Kits       | 2.1              |
| 机械调整范围(°)            | Install Position Adjustment   | 0~14             |
| 工作温度(°C)             | Temperature                   | -40~+60          |
| 天线罩材料                | Radome Material               | 玻璃钢(FRP)         |
| 抱杆直径(mm)             | Diameter of Installation pole | Φ50~ 80          |

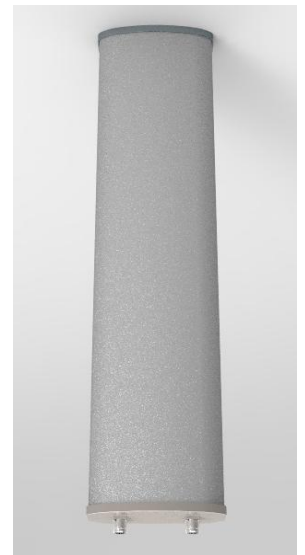


# 基站天线 BST Antenna

- 超宽频 基站天线
- FDD/TDD非电调 2端口 17.5dBi 65°

## SL12767系列

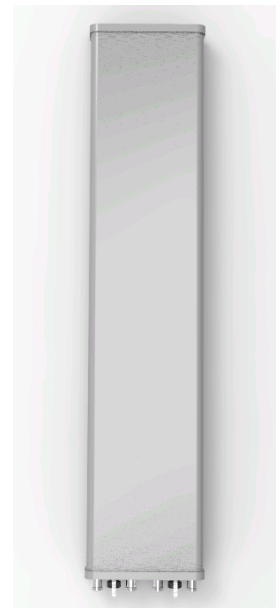
| Electrical Parameter |                               |                  |
|----------------------|-------------------------------|------------------|
| 频率范围(MHz)            | Frequency (MHz)               | 1710-2700        |
| 增益(dBi)              | Gain (dBi)                    | 17.5             |
| 水平波瓣宽度(°)            | Horizontal Beam width(3dB)    | 65±6             |
| 垂直波瓣宽度(°)            | Vertical Beam Width(3dB)      | 7±1              |
| 电下倾角(°)              | Electrical Downtilt           | 0/3/6            |
| 电压驻波比                | VSWR                          | ≤1.5             |
| 端口隔离度(dB)            | Isolation Between Ports       | ≥30              |
| 交叉极化鉴别率(dB)          | Cross Polarization Ratio      | 0°≥15<br>±60°≥10 |
| 上旁瓣抑制(dB)            | Upper Sidelobe Suppression    | N/A              |
| 前后辐射比(dB)            | Front to Back Ratio           | ≥25              |
| 极化形式                 | Polarization                  | ±45°             |
| 平均功率容量(W)            | Input Maximum CW Power        | ≥50              |
| 三阶互调(dBm)            | PIMD 3th                      | ≤-107 (@20W)     |
| 端口阻抗(Ω)              | Impedance                     | 50               |
| 接口形式                 | Input Connector               | 2*7/16DIN female |
| Other Parameter      |                               |                  |
| 天线尺寸(mm)             | Dimensions of Antenna         | 1200×175×86      |
| 包装尺寸(mm)             | Dimensions of Package         | 1400×250×200     |
| 天线重量(kg)             | Weight of Antenna             | 7                |
| 安装架重量(kg)            | Weight of Mounting Kits       | 2.1              |
| 机械调整范围(°)            | Install Position Adjustment   | 0~14             |
| 工作温度(°C)             | Temperature                   | -40~+60          |
| 天线罩材料                | Radome Material               | 玻璃钢(FRP)         |
| 抱杆直径(mm)             | Diameter of Installation pole | Φ50~ 80          |



- 超宽频 基站天线
- FDD/TDD非电调 4端口 17.5dBi 65°

## • SL12990系列

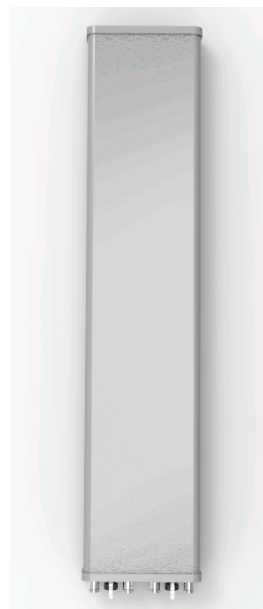
| Electrical Parameter |                               |                  |
|----------------------|-------------------------------|------------------|
| 频率范围(MHz)            | Frequency (MHz)               | 1710-2700        |
| 增益(dBi)              | Gain (dBi)                    | 17.5             |
| 水平波瓣宽度(°)            | Horizontal Beam width(3dB)    | 65±6             |
| 垂直波瓣宽度(°)            | Vertical Beam Width(3dB)      | 7±1              |
| 电下倾角(°)              | Electrical Downtilt           | 0/3/6            |
| 电压驻波比                | VSWR                          | ≤1.5             |
| 端口隔离度(dB)            | Isolation Between Ports       | ≥30              |
| 交叉极化鉴别率(dB)          | Cross Polarization Ratio      | 0°≥15<br>±60°≥10 |
| 上旁瓣抑制(dB)            | Upper Sidelobe Suppression    | 16               |
| 前后辐射比(dB)            | Front to Back Ratio           | ≥25              |
| 极化形式                 | Polarization                  | ±45°             |
| 平均功率容量(W)            | Input Maximum CW Power        | ≥50              |
| 三阶互调(dBm)            | PIMD 3th                      | ≤-107 (@20W)     |
| 端口阻抗(Ω)              | Impedance                     | 50               |
| 接口形式                 | Input Connector               | 4*7/16DIN female |
| Other Parameter      |                               |                  |
| 天线尺寸(mm)             | Dimensions of Antenna         | 1200×290×86      |
| 包装尺寸(mm)             | Dimensions of Package         | 1400×340×180     |
| 天线重量(kg)             | Weight of Antenna             | 15               |
| 安装架重量(kg)            | Weight of Mounting Kits       | 5.3              |
| 机械调整范围(°)            | Install Position Adjustment   | 0~14             |
| 工作温度(°C)             | Temperature                   | -40~+60          |
| 天线罩材料                | Radome Material               | 玻璃钢(FRP)         |
| 抱杆直径(mm)             | Diameter of Installation pole | Φ50~ 80          |



# 基站天线 BST Antenna

- 超宽带 基站天线
  - FDD/TDD 非电调 2端口 19.5dBi 32°
- ▶▶▶▶
- **SL12618系列**

| Electrical Parameter |                               |                              |
|----------------------|-------------------------------|------------------------------|
| 频率范围(MHz)            | Frequency (MHz)               | 1710-2700                    |
| 增益(dBi)              | Gain (dBi)                    | 19.5                         |
| 水平波瓣宽度(°)            | Horizontal Beam width(3dB)    | 32±4                         |
| 垂直波瓣宽度(°)            | Vertical Beam Width(3dB)      | 7±1                          |
| 电下倾角(°)              | Electrical Downtilt           | 0/3/6                        |
| 电压驻波比                | VSWR                          | ≤1.5                         |
| 端口隔离度(dB)            | Isolation Between Ports       | ≥28                          |
| 交叉极化鉴别率(dB)          | Cross Polarization Ratio      | 0°≥15<br>±30°≥10             |
| 上旁瓣抑制(dB)            | Upper Sidelobe Suppression    | ≤-15                         |
| 零点填充(dB)             | Null-fill                     | ≤23                          |
| 前后辐射比(dB)            | Front to Back Ratio           | ≥28                          |
| 极化形式                 | Polarization                  | ±45°                         |
| 平均功率容量(W)            | Input Maximum CW Power        | 250                          |
| 三阶互调(dBm)            | PIMD 3th                      | ≤-107 (@20W)                 |
| 端口阻抗(Ω)              | Impedance                     | 50                           |
| 接口形式                 | Input Connector               | 2*7/16DIN female             |
| Other Parameter      |                               |                              |
| 天线尺寸(mm)             | Dimensions of Antenna         | 1370×290×86                  |
| 包装尺寸(mm)             | Dimensions of Package         | 1700×340×180                 |
| 天线重量(kg)             | Weight of Antenna             | 10                           |
| 安装架重量(kg)            | Weight of Mounting Kits       | 1.2                          |
| 机械调整范围(°)            | Install Position Adjustment   | 0~10                         |
| 工作温度(°C)             | Temperature                   | -40~+60                      |
| 天线罩材料                | Radome Material               | 工程塑料、玻璃钢<br>(Plastic or FRP) |
| 抱杆直径(mm)             | Diameter of Installation pole | Φ50~ 80                      |

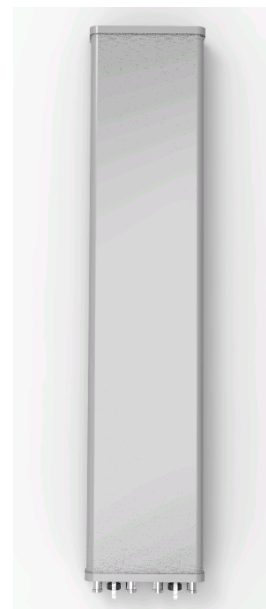




- 超宽频 基站天线
- FDD/TDD 电调天线 4端口 17.5dBi 65°

- **SL17179A**

| Electrical Parameter |                               |                  |
|----------------------|-------------------------------|------------------|
| 频率范围(MHz)            | Frequency (MHz)               | 2* ( 1710-2700 ) |
| 增益(dBi)              | Gain (dBi)                    | 17.5             |
| 水平波瓣宽度(°)            | Horizontal Beam width(3dB)    | 65±6             |
| 垂直波瓣宽度(°)            | Vertical Beam Width(3dB)      | 7±1              |
| 电下倾角(°)              | Electrical Downtilt           | 0~10             |
| 电压驻波比                | VSWR                          | ≤1.5             |
| 端口隔离度(dB)            | Isolation Between Ports       | ≥30              |
| 交叉极化鉴别率(dB)          | Cross Polarization Ratio      | 0°≥15<br>±60°≥10 |
| 上旁瓣抑制(dB)            | Upper Sidelobe Suppression    | 16               |
| 前后辐射比(dB)            | Front to Back Ratio           | ≥25              |
| 极化形式                 | Polarization                  | ±45°             |
| 平均功率容量(W)            | Input Maximum CW Power        | ≥50              |
| 三阶互调(dBm)            | PIMD 3th                      | ≤-107 (@20W)     |
| 端口阻抗(Ω)              | Impedance                     | 50               |
| 接口形式                 | Input Connector               | 4*7/16DIN female |
| Other Parameter      |                               |                  |
| 天线尺寸(mm)             | Dimensions of Antenna         | 1200×290×86      |
| 包装尺寸(mm)             | Dimensions of Package         | 1400×340×180     |
| 天线重量(kg)             | Weight of Antenna             | 15               |
| 安装架重量(kg)            | Weight of Mounting Kits       | 5.3              |
| 机械调整范围(°)            | Install Position Adjustment   | 0~14             |
| 工作温度(°C)             | Temperature                   | -40~+60          |
| 天线罩材料                | Radome Material               | 玻璃钢(FRP)         |
| 抱杆直径(mm)             | Diameter of Installation pole | Φ50~ 80          |



# 基站天线 BST Antenna

- 场馆天线
- 全频 ±45°极化 12dBi H30° E60°

## SL12117A

### Electrical Specifications

|             |                                  | Port1  | Port2                           |
|-------------|----------------------------------|--|---------------------------------|
| 频率范围(MHz)   | Frequency range                  | 698-960/1710-2200/<br>2200-2700                    | 698-960/1710-2200/<br>2200-2700 |
| 极化形式        | Polarization                     | +45°   | -45°                            |
| 电压驻波比       | VSWR                             | ≤ 1.9  |                                 |
| 增益(dBi)     | Gain                             | 11.5±1.5   |                                 |
| 水平波瓣宽度(°)   | Horizontal half-power beam width | 33 ± 8/30±8  |                                 |
| 垂直波瓣宽度(°)   | Vertical half-power beam width   | 65 ± 10/60 ± 10/63 ± 12<br>65 ± 10/60 ± 10/63 ± 12 |                                 |
| 交叉极化鉴别率(dB) | Cross polar ratio                | ≥15  | ≥15                             |
| 前后辐射比(dB)   | Front to Back Ratio              | ≥20  | ≥20                             |
| 隔离度(dB)     | Isolation                        | ≥24  | ≥24                             |
| 三阶互调(dBm)   | PIMD 3th                         | ≤ -110 (2 x 43 dBm carrier)                        |                                 |
| 平均功率容量(W)   | Average power, maximum           | 100  |                                 |
| 端口阻抗(Ω)     | Impedance                        | 50   |                                 |
| 接地形式        | Grounding                        | DC Ground  |                                 |



- 场馆天线
- 全频  $\pm 45^\circ$ 极化 9dBi H60° E60°

## • SL12118A

### Electrical Specifications

|                            |   |  |
|----------------------------|---|--|
| 频率范围(Mhz)                  | Frequency Range                                       | 698-960&1710-2700<br>698-800/800-960/1695-1880/1850-1990/1920-2180/2200-2700/2300-2360 |
| 增益(dBi)                    | Gain at mid Tilt                                      | 8.5/9.2/9.3/9.6/9.8/9.2/8.9  |
| <b>Horizontal Pattern:</b> |   |  |
| 波束宽度(°)                    | Azimuth Beamwidth                                     | 62/59/55/52/55/62/70   |
| 前后辐射比(dB)                  | Front-to-Back Total Power at $180^\circ \pm 30^\circ$ | 26/26/27/28/29/27/29   |
| <b>Vertical Pattern:</b>   |   |  |
| 波束宽度(°)                    | Elevation Beamwidth                                   | 62/58/55/54/55/59/65   |
| 交叉极化鉴别率(dB)                | Cross Polar Ratio at Boresight                        | 24/24/20/20/20/20/20   |
| 电子下倾角(°)                   | Electrical Downtilt                                   | 0  |
| 交叉极化鉴别率(dB)                | Cross Polar Isolation                                 | 30   |
| 电压驻波比                      | VSWR  | 1.8  |
| 极化形式                       | Polarization  | $\pm 45^\circ$   |
| 三阶互调(dBm)                  | Intermodulation IM3                                   | $\leq -107(2 \times 43 \text{ dBm carrier})$   |
| 端口阻抗( $\Omega$ )           | Impedance   | 50   |
| 最大功率(W)                    | Max. Effective Power per Port                         | 200  |

### Mechanical specifications

|       |                             |                           |
|-------|-----------------------------|---------------------------|
| 接口形式  | Input Connector             | 2×7-16 Female Connectors  |
| 接口位置  | Connector Position          | Backside                  |
| 载风速度  | Wind load(m/s)              | 55                        |
| 工作温度  | Operation temperature(°C)   | -40~+60                   |
| 天线尺寸  | Dimension(H×W×D) (mm/in)    | 300×300×125/11.8×11.8×4.9 |
| 天线重量  | Weight(Clamp excl.) (Kg/lb) | 2.9/6.4                   |
| 天线罩材料 | Radome(Color)               | ABS,UV resistant(white)   |



# 基站天线 BST Antenna

- 场馆天线
- 全频 12/13dBi H22° E60°

## SL12992D

### Electrical Specifications

|                                |  |  |
|--------------------------------|--|--|
| 频率范围                           | Frequency Range(Mhz)                       | 698-960&1710-2700<br>698-800/800-960/1695-1880/1850-1990/1920-2180/2200-2700/2300-2360 |
| 增益                             | Gain at mid Tilt(dBi)                      | 12.0/13.4/12.3/12.6/13.2/13.5/13.5   |
| <b>水平极化Horizontal Pattern:</b> |  |  |
| 波束宽度                           | Azimuth Beamwidth(°)                       | 26/23/24/22/20/18/19   |
| 前后辐射比                          | Front-to-Back Total Power at 180°± 30°(dB) | 25/29/35/35/35/30/35   |
| <b>垂直极化Vertical Pattern:</b>   |  |  |
| 波束宽度                           | Elevation Beamwidth(°)                     | 63/61/64/61/62/60/65   |
| 交叉极性比                          | Cross Polar Ratio at Boresight(dB)         | 20/20/15/15/15/15/15   |
| 电子下倾角                          | Electrical Downtilt(°)                     | 0  |
| 交叉极化鉴别率                        | Cross Polar Isolation(dB)                  | 23   |
| 电压驻波比                          | VSWR                                       | 1.7  |
| 极化形式                           | Polarization                               | ±45°   |
| 三阶互调                           | Intermodulation IM3(dBm)                   | ≤-110(2×43 dBm carrier)  |
| 阻抗                             | Impedance(Ω)                               | 50   |
| 最大功率                           | Max. Effective Power per Port(W)           | 200  |

### Mechanical specifications

|      |                           |                          |
|------|---------------------------|--------------------------|
| 接口形式 | Input Connectors          | 2×7-16 Female Connectors |
| 接口位置 | Connector Position        | Backside                 |
| 载风速度 | Wind load(m/s)            | 55                       |
| 工作温度 | Operation temperature(°C) | -40~+60                  |
| 天线尺寸 | Dimension(H×W×D) (mm)     | 933×375×125              |
| 天线重量 | Weight(Clamp excl.) (Kg)  | 8.0                      |
| 外罩材料 | Radome(Color)             | ABS.UV resistant(White)  |



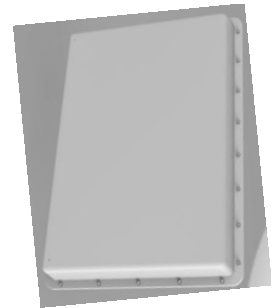


- 场馆天线
- 全频 14/15dBi H33° E33°

- **SL12999B**

### Electrical Specifications

|             |  |  |
|-------------|--|--|
| 频率范围        | Frequency Range(Mhz)                       | 698-960&1710-2700<br>698-800/800-960/1695-1880/1850-1990/1920-2180/2200-2700/2300-2360 |
| 增益          | Gain at mid Tilt(dBi)                      | 14.2/15.4/12.6/13.6/14.2/15.3/15.0   |
| <b>水平极化</b> | Horizontal Pattern:                        |  |
| 波束宽度        | Azimuth Beamwidth(°)                       | 34/29/38/35/32/28/29   |
| 前后辐射比       | Front-to-Back Total Power at 180°± 30°(dB) | 30/32/32/34/34/36/36   |
| 水平旁瓣        | Horizontal Sidelobe,dB                     | 20   |
| <b>垂直极化</b> | Vertical Pattern:                          |  |
| 波束宽度        | Elevation Beamwidth(°)                     | 34/29/38/35/32/28/29   |
| 交叉极化比       | Cross Polar Ratio at Boresight(dB)         | 20/24/18/18/18/18/18   |
| 电子下倾角       | Electrical Downtilt(°)                     | 0  |
| 交叉极化鉴别率     | Cross Polar Isolation(dB)                  | 23   |
| 电压驻波比       | VSWR                                       | 1.5  |
| 极化形式        | Polarization                               | ±45°   |
| 三阶互调        | Intermodulation IM3(dBm)                   | ≤-110(2×43 dBm carrier)  |
| 阻抗          | Impedance(Ω)                               | 50   |
| 最大功率        | Max. Effective Power per Port(W)           | 200  |



### Mechanical specifications

|      |                             |                                |
|------|-----------------------------|--------------------------------|
| 接口形式 | Input Connectors            | 2×4.3-10 Female                |
| 接口位置 | Connector Position          | Backside                       |
| 载风速度 | Wind load(m/s)              | 55                             |
| 工作温度 | Operation temperature(°C)   | -40~+60                        |
| 天线尺寸 | Dimension(H×W×D) (mm/in)    | 1060×740×132/41.7×29.1×5.2     |
| 天线重量 | Weight(Clamp excl.) (Kg/lb) | 20/44.1                        |
| 外罩材料 | Radome(Color)               | Fiberglass,UV resistant(White) |

# 基站天线 BST Antenna

- 场馆天线
- 宽频 矩形波束 H50° E50°

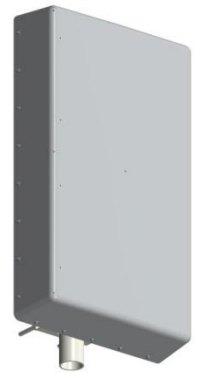
## • SL17324D

### Electrical Specifications

|             |  |  |
|-------------|--|--|
| 频率范围        | Frequency Range(Mhz)                       | 1710-2170&2300-2690<br>1710-1880/1920-2170/2300-2500/2500-2690 |
| 增益          | Gain at mid Tilt(dBi)                      | 10.5/11.5/10/10.5  |
| <b>水平极化</b> | Horizontal Pattern:                        |  |
| 波束宽度        | Azimuth Beamwidth(°)                       | 50±5/45±5/50±5/45±5  |
| 前后辐射比       | Front-to-Back Total Power at 180°± 30°(dB) | ≥30  |
| 水平旁瓣        | Horizontal Sidelobe,dB                     | ≤20  |
| <b>垂直极化</b> | Vertical Pattern:                          |  |
| 波束宽度        | Elevation Beamwidth(°)                     | 50±5/45±5/50±5/45±5  |
| 电子下倾角       | Electrical Downtilt(°)                     | 0  |
| 交叉极化鉴别率     | Cross Polar Isolation(dB)                  | ≥28  |
| 电压驻波比       | VSWR                                       | ≤1.5   |
| 极化形式        | Polarization                               | ±45°   |
| 三阶互调        | Intermodulation IM3(dBm)                   | ≤-110(2×43 dBm carrier)  |
| 阻抗          | Impedance(Ω)                               | 50   |
| 最大功率        | Max. Effective Power per Port(W)           | 200  |

### Mechanical specifications

|      |                             |                                |
|------|-----------------------------|--------------------------------|
| 接口形式 | Input Connectors            | 2×7-16 Female                  |
| 接口位置 | Connector Position          | Backside                       |
| 载风速度 | Wind load(m/s)              | 55                             |
| 工作温度 | Operation temperature(°C)   | -40~+70                        |
| 天线尺寸 | Dimension(H×W×D) (mm/in)    | 930×530×173                    |
| 天线重量 | Weight(Clamp excl.) (Kg/lb) | 24                             |
| 外罩材料 | Radome(Color)               | Fiberglass,UV resistant(White) |



- 场馆天线
- 宽频 矩形波束 H30° E30°

- **SL12113A**

| Electrical Specifications |                                      |                             |           |
|---------------------------|--------------------------------------|-----------------------------|-----------|
|                           | Port                                 | Port1                       | Port2     |
| 频率范围                      | Frequency range (MHz)                | 1710-2700                   | 1710-2700 |
| 极化形式                      | Polarization                         | +45°                        | -45°      |
| 电压驻波比                     | VSWR                                 | ≤ 1.8                       | ≤ 1.8     |
| 增益                        | Gain (dBi)                           | 15                          | 15        |
| 水平波瓣宽度                    | Horizontal half-power beam width (°) | 30                          | 30        |
| 垂直波瓣宽度                    | Vertical half-power beam width (°)   | 30                          | 30        |
| 前后辐射比                     | Front to Back Ratio (dB)             | ≥25                         | ≥25       |
| 隔离度                       | Isolation (dB)                       | ≥20                         | ≥20       |
| 三阶互调                      | PIM, 3rd Order (dBc)                 | ≤ -107 (2 x 33 dBm carrier) |           |
| 平均功率容量                    | Average power, maximum (W)           | 50                          |           |
| 端口阻抗                      | Impedance (Ω)                        | 50                          |           |
| 接地形式                      | Grounding                            | DC Ground                   |           |
| Mechanical Specifications |                                      |                             |           |
| 天线尺寸(mm)                  | Dimensions (H x W x D)               | 288×288×45                  |           |
| 包装尺寸(mm)                  | Packing dimensions (H x W x D)       | 340×300×102                 |           |
| 天线重量(kg)                  | Net weight(with installation kit)    | ≤2.7                        |           |
| 包装重量(kg)                  | Packing weight                       | ≤3.0                        |           |
| 天线外罩材料                    | Radome material                      | ABS+PC                      |           |
| 应用环境                      | Application                          | Indoor / Outdoor            |           |
| 工作温度(°C)                  | Operating temperature                | -40 to +65                  |           |
| 载风速度(km/h)                | Rated Wind Velocity                  | 200                         |           |
| 接口形式                      | Connector                            | 2 x N-Female                |           |





**帮助客户成功 成就无限沟通**



**广东盛路通信科技股份有限公司**  
GUANGDONG SHENGLU TELECOMMUNICATION TECH.CO.,LTD

地址：广东省佛山市三水区西南工业园进业二路4号  
Add: NO.4, Jin Ye Second Road, XiNan industry area, Sanshui, Foshan, GuangDong, China  
邮政编码 (Post Code) : 528100  
电话 (Tel) :0757-87719589 87744989 87744382 87721633  
传真 (Fax) :0757-87744997 87744978  
网址 (Web) :www.shenglu.com